



LP0228

FITTING INSTRUCTIONS FOR LP0228SS LICENCE PLATE BRACKET
MV AGUSTA F4 RC 2015-WITH SC PROJECT RACE
EXHAUST ONLY

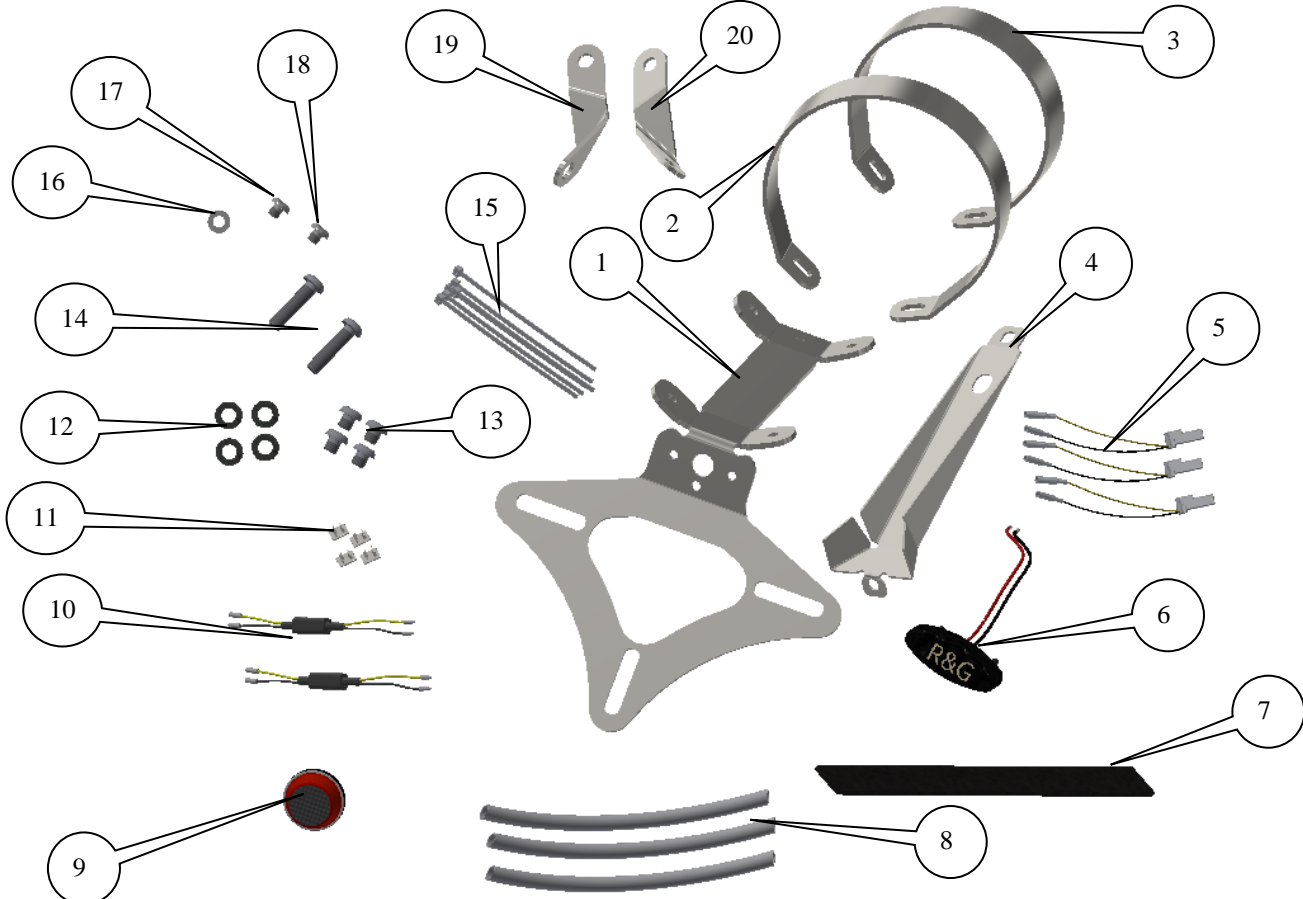
Page | 1



THIS KIT CONTAINS THE ITEMS PICTURED AND LABELLED BELOW.
DO NOT PROCEED UNTIL YOU ARE SURE ALL PARTS ARE PRESENT.

Please note that the way the kit is packed does not necessarily represent the way of mounting to the bike

THE PARTS SHOWN MAY BE REPRESENTATIVE ONLY (FOR CLARITY OF INSTRUCTIONS ONLY)





LP0228

LEGEND

Page | 2

- ITEM 1 = LICENCE PLATE MOUNTING BRACKET (TB0228 PART 1) (x1).
- ITEM 2 = REAR MOUNTING BRACKET (TB0228 PART 2) (x1).
- ITEM 3 = FRONT MOUNTING BRACKET (TB0228 PART 3) (x1).
- ITEM 4 = COVER BRACKET (TB0228 PART 4) (x1).
- ITEM 5 = LICENCE PLATE ILLUMINATOR /// INDICATOR CONNECTORS (CON0014) (x3).
- ITEM 6 = LICENCE PLATE ILLUMINATOR ASSEMBLY (LA0002) (x1).
- ITEM 7 = 650mm LENGTH OF HEAT RESISTANT SILICON (SRS007) (x1).
- ITEM 8 = 350mm LENGTHS OF HEAT SHIELD (x3).
- ITEM 9 = REFLECTOR (REFL 1) (x1).
- ITEM 10 = MINI INDICATOR RESISTORS (RGR0001) (x2).
- ITEM 11 = SELF ADHESIVE CABLE CLIPS (x4).
- ITEM 12 = M6 WASHERS (x4).
- ITEM 13 = M6x6mm BUTTON HEAD BOLTS (x4).
- ITEM 14 = M6x25mm BUTTON HEAD BOLTS (x2).
- ITEM 15 = CABLE TIES (CT0075) (x8).
- ITEM 16 = M5 WASHER (x1).
- ITEM 17 = M5x5mm BUTTON HEAD BOLT (x1).
- ITEM 18 = M5x6mm CAP HEAD BOLT (x1).
- ITEM 19 = RHS MINI INDICATOR MOUNTING BRACKET (TB0228 PART 6) (x1).
- ITEM 20 = RHS MINI INDICATOR MOUNTING BRACKET (TB0228 PART 5) (x1).

Please note that in cases where kits are packed with rubber washers holding the components onto the bolt – *the rubber washers should be thrown away!*

TOOLS REQUIRED

- Set of metric Allen keys.
 - Metric Socket set.
 - Phillips driver.
- Small amount of super glue.
- Thick plastic sheet or towel.
- Large jubilee clip that fits around the end can.
 - Roll of electrical tape.



PICTURE 1



PICTURE 2

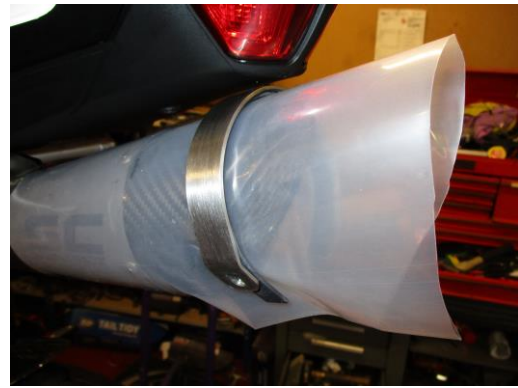
R&G Racing
Unit 1, Shelley's Lane, East Worldham, Alton, Hampshire, GU34 3AQ
Tel: +44 (0)1420 89007 Fax: +44 (0)1420 87301 www.rg-racing.com Email: info@rg-racing.com



LP0228



PICTURE 3



PICTURE 4



PICTURE 5



PICTURE 6



PICTURE 7



PICTURE 8



LP0228

Page | 4



PICTURE 9



PICTURE 10



PICTURE 11



PICTURE 12



PICTURE 13



PICTURE 14

R&G Racing
Unit 1, Shelley's Lane, East Worldham, Alton, Hampshire, GU34 3AQ
Tel: +44 (0)1420 89007 Fax: +44 (0)1420 87301 www.rg-racing.com Email: info@rg-racing.com



LP0228

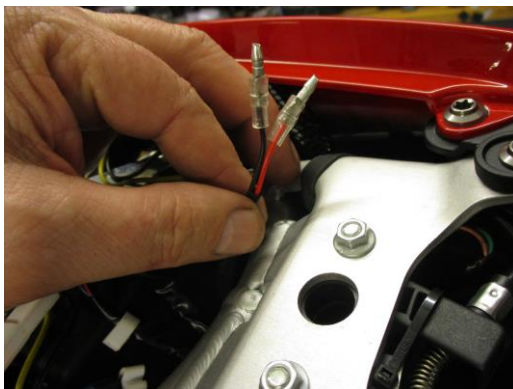
Page | 5



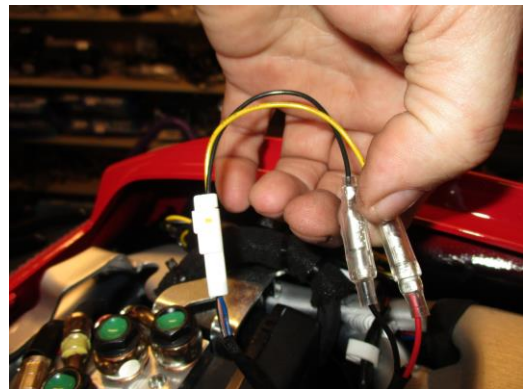
PICTURE 15



PICTURE 16



PICTURE 17



PICTURE 18



PICTURE 19



PICTURE 20



LP0228

Page | 6



PICTURE 21



PICTURE 22

FITTING INSTRUCTIONS

- There is some prep work that should be done before starting, as listed below.
- Take the length of heat resistant silicon (item 7) and line both the front and rear mounting brackets (items 2 and 3) as shown in picture 1 (a small amount of adhesive will aid to hold in place during fitment).
- Take the length of heat resistant silicon (item 7) and line the bottom face of the licence plate bracket (item 1) shown in picture 2 (a small amount of adhesive will aid to hold in place during fitment).
- wrap a suitable sheet of plastic or towel around the end can as shown in picture 3 to protect the end can during fitment.
- To fit the R&G tail tidy, remove the pillion seat using the key.
- Take the front mounting bracket (item 3 (it is the smaller of the two) and gently spread and offer over the protective cover as shown in picture 4 and carefully position towards the smaller end of the end can as shown in picture 5.
- Repeat this process for the rear mounting bracket (item 2) as shown in picture 6.
- Line the jubilee clip with electrical tape as shown in picture 7 to protect the end can.
- Take the R&G licence plate mounting bracket (item 1) and fit the R&G licence plate illuminator (item 6) to the assembly, as shown in pictures 8 and 9. Use a small amount of superglue to stick the light shroud in position. Fit one length of heat shield (item 8) to the wires and tighten the nuts on the rear, as shown in picture 9.
- Offer this assembly into position as shown in picture 10 and use two of the smaller M6 button head bolts (item 13) with the M 6 washers (item 12) to hold in position (you will only be able to fit one bolt per bracket at present).
- Carefully remove the protective sheet.
- Use the jubilee clip to pull one of the mounting brackets in to line up with the main bracket as shown in picture 11 and secure in the correct position use one of the remaining M6 button head bolts (item 13) and washer (item 12).
- Use the same jubilee clip to pull the remaining mounting bracket in to line up with the main bracket as shown in picture 12 and secure in the correct position use the remaining M6 button head bolt (item 13) and washer (item 12).
- Feed the licence plate illuminator wiring through the hole in the cover bracket (item 4) and offer into position as shown in picture 13.

R&G Racing

Unit 1, Shelley's Lane, East Worldham, Alton, Hampshire, GU34 3AQ

Tel: +44 (0)1420 89007 Fax: +44 (0)1420 87301 www.rg-racing.com Email: info@rg-racing.com



LP0228

Page | 7

- Use the M5 cap head bolt (item 18) to secure in position as shown in picture 14.
- Use the M5 button head bolt (item 17) with the M5 washer (item 16) to secure in position as shown in picture 15.
- Feed the licence plate illuminator wiring through the hole in the under-tray and fix away from the end can using the supplied cable clips (item 11) as shown in pictures 16 and 17.
- Connect the licence plate illuminator to the wiring loom using one of the connectors (item 5) as shown in picture 18.

If fitting R&G mini indicators (R&G product code RG371=LED or RG372 = Aero LED)

- Remove the two bolts arrowed in picture 19.
- Fit the indicators of choice (as listed above) to the indicator mounting brackets (items 19 and 20) as shown in picture 20. Please use the remaining heat shield (item 8) to protect the wiring. **(Please note you will have to use the in-line resistors (item 10) to correct the flash rate as shown in picture 21.**
- **Secure these assemblies in position as shown in picture 22 using the two longer M6 bolts (item 14) please ensure the indicator are visible when in operation.**
- **Connect to the original wiring loom using the remaining connectors (item 5).**
- **Use the supplied cable ties (item 15) to tidy and secure the wiring.**
- Ensure the tail tidy is securely mounted and all bolts are fully tightened.
- Re-fit the pillion seat.
- Re-fit the licence plate (it may require drilling).
- Depending on local laws, attach enclosed reflector (item 15) in an appropriate location.
- Test the license plate illuminator and all lights before riding.
- **IMPORTANT: IF FITTING A FULL-SIZE LICENCE PLATE AND PLACING IT FAR DOWN ON THE LICENCE PLATE HANGER, THERE IS A SMALL CHANCE OF THE LICENCE PLATE HITTING THE BACK WHEEL UNDER HEAVY LOAD AND OVER LARGE BUMPS IN THE ROAD. IT IS YOUR RESPONSIBILITY TO CHECK FOR THIS POSSIBILITY AND TAKE AVOIDING ACTION. FAILURE TO CHECK THIS COULD RESULT IN SERIOUS INJURY.**
- **Please test the indicators, rear light and licence plate illuminator before riding.**

Digital copies of these instructions are available to download from www.rg-racing.com

GENERAL TORQUE SETTINGS

M4 BOLT = 8Nm
M5 BOLT = 12Nm
M6 BOLT = 15Nm
M8 BOLT = 20Nm
M10 BOLT = 40Nm

ISSUE 1 14/07/2017 (NSY)

CONSUMER NOTICE

The catalogue description and any exhibition of samples are only broad indications of the Products and R&G may make design changes which do not diminish their performance or visual appeal and supplying them in such state shall conform to the order. The Buyer acknowledges no representation or warranty (other than as to title) has been given or will apply to the Products other than those in R&G's order or confirmation and the Buyer confirms it has chosen the Products as being of merchantable quality and suitable for its particular purposes. Where R&G fits the Products or undertakes other services it shall exercise reasonable

R&G Racing
Unit 1, Shelley's Lane, East Worldham, Alton, Hampshire, GU34 3AQ
Tel: +44 (0)1420 89007 Fax: +44 (0)1420 87301 www.rg-racing.com Email: info@rg-racing.com



LP0228

skill and care and rectify any fault free of charge unless the workmanship has been disturbed. The Buyer is responsible for ensuring that the warranty on the motorcycle is not affected by the fitting of the Products. On return of any defective Products R&G shall at its option either supply a replacement or refund the purchase money but shall not be liable if the Products have been modified or used or maintained otherwise than in accordance with R&G's or manufacturer's instructions and good engineering practice or if the defect arises from accident or neglect. Other than identified above and subject to R&G not limiting its liability for causing death and personal injury, it shall not be liable for indirect or consequential loss and otherwise its liability shall be limited to the amounts paid by the Buyer for the Products or the fitting or service concerned. These terms do not affect the Buyer's statutory rights.

Page | 8

R&G RACING RETURNS POLICY (NON-FAULTY GOODS)

Returns must be pre-authorized (if not pre-authorized the return will be rejected). Goods may only be returned direct to us if they were purchased direct from us (customer must prove if necessary). Otherwise to be returned to original vendor. Goods must be in re-sellable condition, in the opinion of R&G Racing. All returns are subject to a 25% restocking and handling fee (25% of the gross value exc. P&P – at the prevailing price at time of purchase). The customer must pay any and all carriage charges. No returns of discontinued products, unless within 14 days of purchase. This policy does not affect your statutory rights and does not refer to faulty goods.

R&G Racing

Unit 1, Shelley's Lane, East Worldham, Alton, Hampshire, GU34 3AQ

Tel: +44 (0)1420 89007 Fax: +44 (0)1420 87301 www.rg-racing.com Email: info@rg-racing.com



LP0228

**NOTICE DE MONTAGE POUR LP0228SS SUPPORT DE PLAQUE
MV AGUSTA F4 RC 2015-AVEC POT SC COURSE UNIQUEMENT**

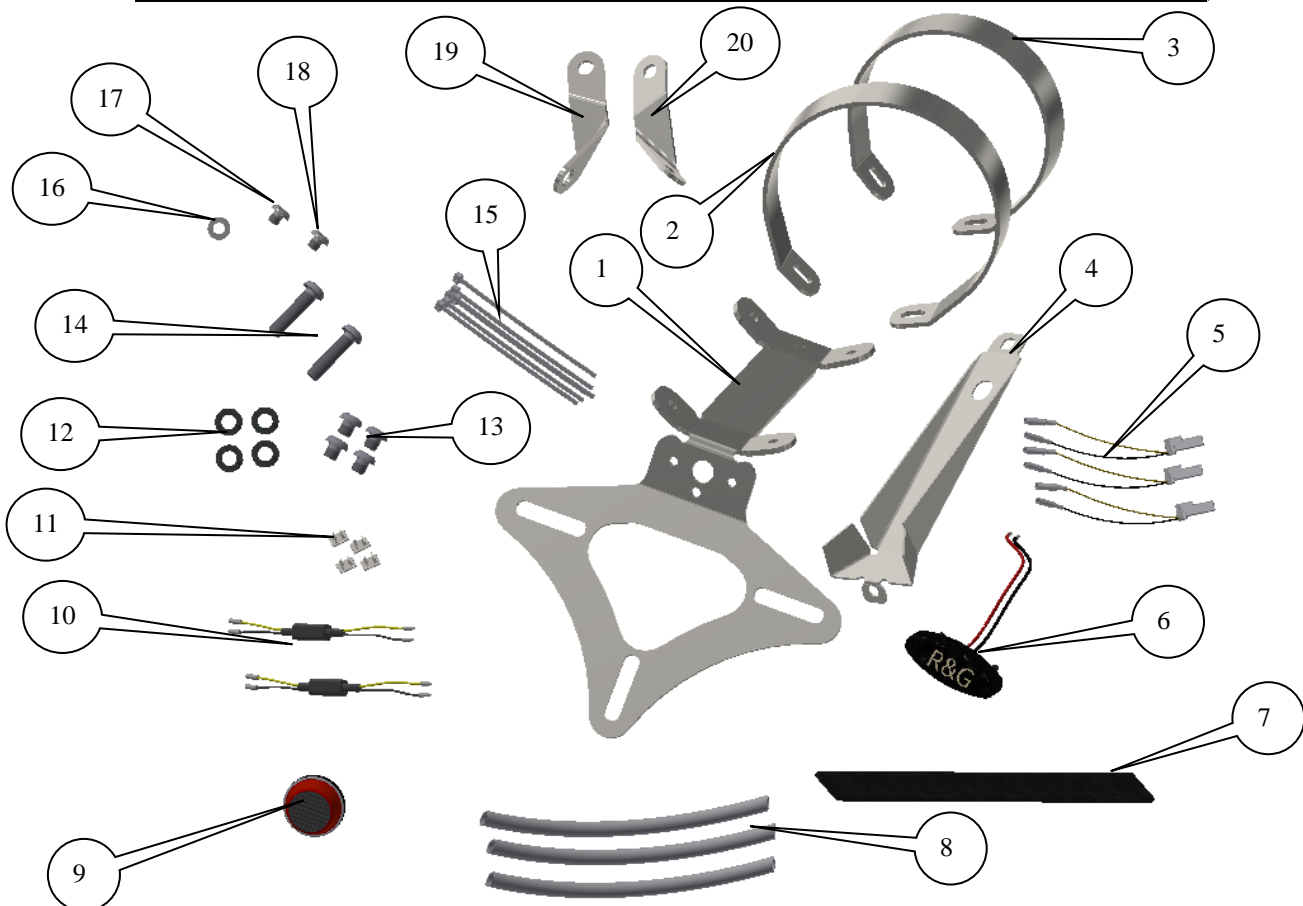
Page | 9



Le kit contient les articles exposés ci-dessous, vérifier que toutes les pièces soient présentes avant de procéder au montage.

La façon dont le kit est emballé ne correspond pas forcément à la façon de monter les pièces sur la moto.

LES PARTIES PRESENTEES PEUVENT ETRE UNIQUEMENT REPRESENTATIVES (POUR LA CLARTE DES INSTRUCTIONS UNIQUEMENT)





LP0228

Page | 10

LEGENDE

- ARTICLE 1 = SUPPORT DE FIXATION PLAQUE (TB0228 PART 1) (x1).
ARTICLE 2 = SUPPORT DE FIXATION ARRIÈRE (TB0228 PART 2) (x1).
ARTICLE 3 = SUPPORT DE FIXATION AVANT (TB0228 PART 3) (x1).
ARTICLE 4 = CACHE SUPPORT (TB0228 PARTIE 4) (x1).
ARTICLE 5 = FEU DE PLAQUE /// CONNECTEURS DE CLIGNOTANT (CON0014) (x3).
ARTICLE 6 = ASSEMBLAGE FEU DE PLAQUE (LA0002) (x1).
ARTICLE 7 = 650mm LONGUEUR DE SILICONE RÉSISTANT À LA CHALEUR (SRS007) (x1).
ARTICLE 8 = 350mm BANDEAU ANTI CHALEUR (x3).
ARTICLE 9 = REFLECTEUR (REFL 1) (x1).
ARTICLE 10 = RÉSISTANCES MINI CLIGNOTANTS (RGR0001) (x2).
ARTICLE 11 = CLIPS CÂBLE AUTOCOLLANTS (x4).
ARTICLE 12 = M6 RONDELLES (x4).
ARTICLE 13 = M6x6mm BOULONS (x4).
ARTICLE 14 = M6x25mm BOULONS (x2).
ARTICLE 15 = COLLIERS DE SERRAGE (CT0075) (x8).
ARTICLE 16 = M5 RONDELLE (x1).
ARTICLE 17 = M5x5mm BOULON (x1).
ARTICLE 18 = M5x6mm BOULON (x1).
ARTICLE 19 = SUPPORT DE FIXATION MINI CLIGNOTANT DROIT (TB0228 PARTIE 6) (x1).
ARTICLE 20 = SUPPORT DE FIXATION MINI CLIGNOTANT DROIT (TB0228 PARTIE 5) (x1).

Notez que si les kits sont emballés avec des rondelles en caoutchouc servant à tenir les composants, *ces rondelles doivent être jetées !*

OUTILS REQUIS

- Clés Allen.
- Clé métrique.
- Tournevis cruciforme.
- Un peu de super glue.
- Feuille ou toile en plastique épais.
- Grand clip qui s'adapte autour de l'extrémité du pot.
- Rouleau d'adhésif électrique.



PHOTO 1



PHOTO 2

R&G Racing

Unit 1, Shelley's Lane, East Worldham, Alton, Hampshire, GU34 3AQ
Tel: +44 (0)1420 89007 Fax: +44 (0)1420 87301 www.rg-racing.com Email: info@rg-racing.com



LP0228

Page | 11



PHOTO 3

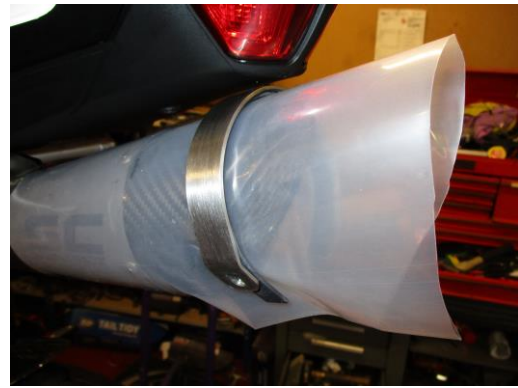


PHOTO 4



PHOTO 5



PHOTO 6



PHOTO 7



PHOTO 8

R&G Racing
Unit 1, Shelley's Lane, East Worldham, Alton, Hampshire, GU34 3AQ
Tel: +44 (0)1420 89007 Fax: +44 (0)1420 87301 www.rg-racing.com Email: info@rg-racing.com



LP0228

Page | 12



PHOTO 9



PHOTO 10



PHOTO 11



PHOTO 12



PHOTO 13



PHOTO 14

R&G Racing
Unit 1, Shelley's Lane, East Worldham, Alton, Hampshire, GU34 3AQ
Tel: +44 (0)1420 89007 Fax: +44 (0)1420 87301 www.rg-racing.com Email: info@rg-racing.com



LP0228

Page | 13



PHOTO 15



PHOTO 16

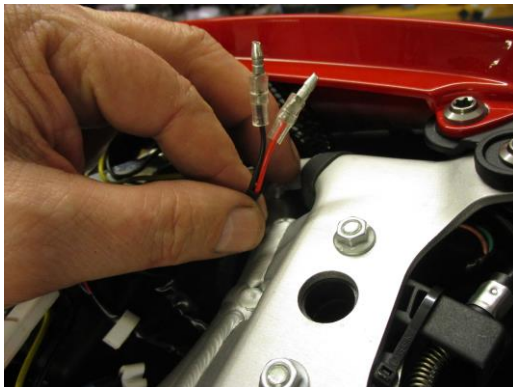


PHOTO 17

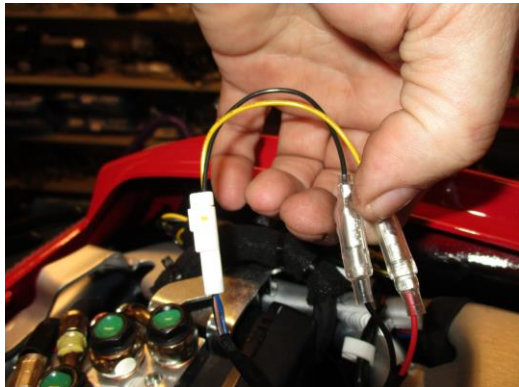


PHOTO 18

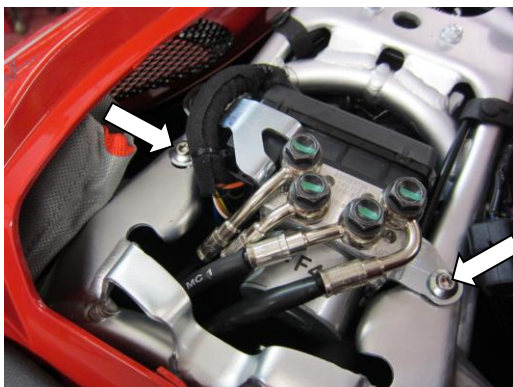


PHOTO 19



PHOTO 20



LP0228

Page | 14



PHOTO 21



PHOTO 22

NOTICE DE MONTAGE

- Il y a un petit travail préparatoire avant de commencer, voir ci-dessous.
- Prendre une longueur de silicone résistant à la chaleur (article 7) et alignez la sur les supports de fixation avant et arrière (articles 2 et 3), voir photo 1 (Un peu d'adhésif aidera à maintenir la position lors du montage).
- Prendre une longueur de silicone résistant à la chaleur (article 7) et alignez le au bas du support de plaque (article 1), voir photo 2 (Un peu d'adhésif aidera à maintenir la position lors du montage).
- Enrouler une feuille appropriée de plastique ou une serviette autour de l'extrémité de pot, voir photo 3 pour protéger l'extrémité du pot pendant l'installation.
- Pour monter le support de plaque R&G, enlever le siège passager à l'aide de la clé.
- Prendre le support de fixation avant (article 3) (c'est le plus petit des 2), écartez-le légèrement et positionner le sur le cache de protection, voir photo 4, puis contre l'extrémité la plus petite de l'extrémité de pot, voir photo 5.
- Répéter ce process pour le support de fixation arrière (article 2), voir photo 6.
- Aligner le clip jubilé avec l'adhésif électrique, voir photo 7 pour protéger l'extrémité de pot.
- Prendre le support de fixation de plaque R&G (article 1) puis monter le feu de plaque R&G (article 6) sur l'assemblage, voir photos 8 et 9. Utiliser un peu de superglue pour coller le linceul de feu en position. Appliquer un bandeau contre la chaleur (article 8) sur les fils puis serrer les écrous à l'arrière, voir photo 9.
- Monter l'ensemble en position, voir photo 10 et utiliser 2 boulons M6 (article 13) avec les rondelles M6 (article 12) pour maintenir la position (vous pourrez juste insérer un boulon par support pour le moment).
- Enlever délicatement le papier protecteur.
- Utiliser le clip jubilé pour tirer l'un des supports de montage pour aligner le support principal, voir photo 11 et fixer dans la position correcte à l'aide du boulon M6 restant (article 13) et d'une rondelle (article 12).
- Utiliser le même clip jubilé pour tirer le support de montage restant pour aligner le support principal, voir photo 12 et fixer dans la position correcte à l'aide du boulon M6 restant (article 13) et d'une rondelle (article 12).
- Passer les fils de feu de plaque dans le trou du cache de support (article 4) puis montez le en position, voir photo 13.

R&G Racing

Unit 1, Shelley's Lane, East Worldham, Alton, Hampshire, GU34 3AQ

Tel: +44 (0)1420 89007 Fax: +44 (0)1420 87301 www.rg-racing.com Email: info@rg-racing.com



LP0228

Page | 15

- Utiliser le boulon M5 (article 18) pour fixer la position, voir photo 14.
- Utiliser le boulon M5 (article 17) avec la rondelles M5 (article 16) pour fixer la position, voir photo 15.
- Passer les fils de feu de plaque dans le trou du sous plateau et fixer loin de l'extrémité de pot, en utilisant les clips câble fournis (article 11) voir photos 16 et 17.
- Connecter le feu de plaque au faisceau de câbles en utilisant un des connecteurs (article 5) voir photo 18.

Si vous montez les mini clignotants R&G (R&G code produit RG371=LED ou RG372 = LED latérale)

- Enlever les 2 boulons, voir photo 19.
- Monter les clignotants de votre choix (comme listé ci-dessus) sur les supports de fixation de clignotants (articles 19 et 20), voir photo 20. Utiliser le bandeau anti chaleur restant (article 8) pour protéger les fils. (Note : Vous devrez utiliser des résistances en ligne (article 10) pour obtenir le bon niveau d'éclairage, voir photo 21.
- Fixer l'ensemble en position, voir photo 22 en utilisant les 2 boulons M6 (article 14) veiller à ce que le clignotant soit visible lors de l'opération.
- Connecter au faisceau de câble d'origine en utilisant les connecteurs restant (article 5).
- Utiliser les colliers de serrage fournis (article 15) pour grouper les fils ensemble.
- Veiller à ce que le support de plaque soit correctement fixé et que chaque boulon soit correctement serré.
- Remonter le siege passager
- Remonter la plaque (peut nécessiter un perçage).
- Selon la loi locale, attachez le réflecteur (article 15) fourni à son emplacement approprié.
- Tester tous les feux avant de prendre la route.
- **IMPORTANT : Si vous installez une grosse plaque, il y a un risque que la plaque entre en contact avec la roue arrière en cas de choc sur la route (bosse, grosse charge etc...). Il est de votre responsabilité de vérifier que cela ne puisse pas se produire. Ne pas effectuer ces vérifications peut entraîner des dommages ainsi que des blessures graves pour le pilote.**
- **Tester le feu de plaque, les clignotants, ainsi que l'ensemble des feux avant de prendre la route.**

Notice disponible sur www.rg-racing.com

VAEURS DE SERRAGE RECOMMANDÉS :

M4 BOULON = 8Nm
M5 BOULON = 12Nm
M6 BOULON = 15Nm
M8 BOULON = 20Nm
M10 BOULON = 40Nm

ISSUE 1 14/07/2017 (NSY)

CONSUMER NOTICE

The catalogue description and any exhibition of samples are only broad indications of the Products and R&G may make design changes which do not diminish their performance or visual appeal and supplying them in such state shall conform to the order. The Buyer acknowledges no representation or warranty (other than as to title) has been given or will apply to the Products other than those in R&G's order or confirmation and the Buyer confirms it has chosen the Products as being of merchantable quality

R&G Racing

Unit 1, Shelley's Lane, East Worldham, Alton, Hampshire, GU34 3AQ

Tel: +44 (0)1420 89007 Fax: +44 (0)1420 87301 www.rg-racing.com Email: info@rg-racing.com



LP0228

and suitable for its particular purposes. Where R&G fits the Products or undertakes other services it shall exercise reasonable skill and care and rectify any fault free of charge unless the workmanship has been disturbed. The Buyer is responsible for ensuring that the warranty on the motorcycle is not affected by the fitting of the Products. On return of any defective Products R&G shall at its option either supply a replacement or refund the purchase money but shall not be liable if the Products have been modified or used or maintained otherwise than in accordance with R&G's or manufacturer's instructions and good engineering practice or if the defect arises from accident or neglect. Other than identified above and subject to R&G not limiting its liability for causing death and personal injury, it shall not be liable for indirect or consequential loss and otherwise its liability shall be limited to the amounts paid by the Buyer for the Products or the fitting or service concerned. These terms do not affect the Buyer's statutory rights.

Page | 16

R&G RACING RETURNS POLICY (NON-FAULTY GOODS)

Returns must be pre-authorized (if not pre-authorized the return will be rejected). Goods may only be returned direct to us if they were purchased direct from us (customer must prove if necessary). Otherwise to be returned to original vendor. Goods must be in re-sellable condition, in the opinion of R&G Racing. All returns are subject to a 25% restocking and handling fee (25% of the gross value exc. P&P – at the prevailing price at time of purchase). The customer must pay any and all carriage charges. No returns of discontinued products, unless within 14 days of purchase. This policy does not affect your statutory rights and does not refer to faulty goods.

R&G Racing

Unit 1, Shelley's Lane, East Worldham, Alton, Hampshire, GU34 3AQ

Tel: +44 (0)1420 89007 Fax: +44 (0)1420 87301 www.rg-racing.com Email: info@rg-racing.com